



Moyvannan Electricity Substation

# Environmental Impact Assessment Report

## Annex 1.6: Community Consultation Report

Energia Renewables ROI Limited

Galetech Energy Services

Clondargan, Stradone, Co. Cavan Ireland

Telephone +353 (0)49 555 5050

[www.galetechenergyservices.com](http://www.galetechenergyservices.com)



# Moyvannan Electricity Substation

## Community Consultation Report

October 2024



# Moyvannan Electricity Substation

## Community Consultation Report – August 2024

This report was prepared to give an overview of the project team's pre-application engagement with the local community in respect of the proposed Moyvannan 110 kV Substation. The Energia Renewables and Galetch Energy Developments (GED) project team have engaged with local residents, businesses and locally elected representatives in the area.

The report outlines the community engagement initiatives undertaken by our dedicated project Community Liaison Officer (CLO) and wider project team prior to the submission of the planning application. It also outlines the main questions and concerns identified during this process, which the project team have sought to address.

### 1. Project Website

Energia Renewables and GED launched a stand-alone project website for the proposed Moyvannan 110 kV Substation: [www.moyvannansubstation.ie](http://www.moyvannansubstation.ie).

The website is an important channel of communication to keep members of the public informed about the proposed development (see Appendices A, B and C).

Information on the website includes:

- Maps of the proposed substation location
- Information brochure for viewing and downloading
- Link to the project photomontage booklet (initial draft photomontage updated with full set in August 2024)
- FAQs
- Contact details for the Project CLO

Once the planning application has been submitted, the website will host all associated documentation in line with Strategic Infrastructure Development statutory planning application requirements.

### 2. Notification of Local Community

To inform local residents about the proposed Moyvannan 110 kV Substation, the CLO delivered information and contact details to households within a radius of up to 1 km of the electricity substation site over a period of two days (6<sup>th</sup> and 7<sup>th</sup> June 2024). The CLO answered questions on the doorstep and requested contact details for follow-up communications and responses. Information distributed to each household consisted of an information brochure on the proposed development (see Appendix D). Residents were given a letter inviting them to a drop-in public information event (see Appendix E), which was held on Wednesday 19<sup>th</sup> June 2024 at St Brigid's GAA Club, Newpark, Kiltoom. Householders were also encouraged to discuss the project and share details of the event with neighbours.

The project brochure contained the following information:

- Project overview
- Map of proposed substation location
- Photomontage of existing and proposed infrastructure
- Outline of the SID planning process
- FAQs
- Project contact details

### 3. Newspaper Advertisement of Community Information Event

The drop-in public information event at St Brigid's GAA Club was advertised in both the Roscommon Herald (estimated circulation: 8,300) on Tuesday 11<sup>th</sup> June 2024 and the Westmeath Independent (estimated circulation: 7,700) on Saturday 15<sup>th</sup> June. The notices informed the local community of the date, time and venue and provided contact details for the CLO (see Appendices F and G).

### 4. Notification of Local Elected Representatives

Energia Renewables contacted local TDs and Councillors representing the Municipal District of Athlone within Roscommon County Council and sent a link to the project website and information brochure, together with an invitation to attend the public information event (see Appendix H).

### 5. Public Information Drop-in Event

Energia Renewables and GED held a public information drop-in event at St Brigid's GAA Club in Newpark on Wednesday 19<sup>th</sup> June from 3pm – 8pm. Approximately 40 people attended (see Appendix I).

The St Brigid's GAA Clubhouse in Newpark, Kiltoom, was chosen as a suitable venue due to its facilities, availability and proximity to the proposed Moyvannan 110 kV substation site.

Large maps and photomontages were available for viewing on printed information boards (see Appendix J). A television screen was also used to show maps, photomontages and engineering drawings in greater detail. The project team used Google Earth files to show residents where their property was in relation to the proposed substation development.

The project team on hand to answer questions included the project manager, electrical engineers, planning officers, a planning consultant and community liaison officers. The main queries raised during the information session, as recorded by the project team at the event, were:

1. Visual impact
2. Construction access
3. Construction duration
4. Grid connection and road works
5. EMF levels



## 7. Follow-up Engagement

Residents were asked to provide contact details so that the project team could contact them with answers to their queries and follow-up information, including the full set of photomontages. Attendees interested in receiving project updates were asked to fill out contact details on forms, which set out Energia's GDPR policy with instructions on how to opt out and have details removed from project logs at any time (see Appendix K).

# Appendix A



## Moyvannan 110 kV Substation Development

# Kiltoom, Co. Roscommon

Energia Renewables and Galetech Energy Developments are working on plans for a 110 kV transmission substation in the townland of Moyvannan in South Roscommon. The proposed substation will facilitate the export of renewable energy from the Seven Hills Wind Farm project near Dysart to the national grid.

### Project Overview

The proposed Moyvannan 110 kV Substation will connect to the existing Lanesborough to Athlone overhead transmission line and will facilitate the connection of the Seven Hills Wind Farm project to the national grid.

No additional overhead lines will be installed. Approximately 7.5km of underground electricity cable will connect the substation to an underground electricity cable at Brideswell, as part of the Seven Hills Wind Farm development.

This will help Ireland to reach its 80% renewable electricity target by 2030, reducing our reliance on fossil fuels and increasing security of energy supply.

You can [find out more about our Seven Hills Wind Farm development here](#).

[Click here to view map in greater detail.](#)



### Location of proposed Moyvannan 110 kV Substation

#### About the site

The proposed substation site is located within an agricultural field and has undergone extensive technical and environmental evaluation. It was selected based on a number of key considerations:

- Proximity to the Seven Hills Wind Farm development and the existing Lanesborough to Athlone 110 kV overhead transmission line
- Accessibility and proximity to main transport routes for the delivery of large components

The site has been subject to a comprehensive landscape and visual impact study to assess potential impacts on the landscape and sensitive receptors.

[Click here to view map in greater detail.](#)



# Appendix B

Map of proposed Moyvannan 110 kV Substation and Seven Hills Wind Farm development

## Project details

The proposed Moyvannan 'loop-in loop-out' 110 kV Substation will comprise:

- A compound enclosed by security fencing and gates
- An electrical control building containing electrical plant and equipment
- Two interface masts, approx. 15 m high, and overhead electrical cables to facilitate connection to the existing 110 kV overhead line
- Compound ancillary infrastructure will include busbars, line bays, surge arrestors, insulating and earthing equipment, circuit breakers, lighting stands and lightning masts
- Approximately 7.5km of underground electricity cable, connecting the substation to an underground electricity cable at Brideswell as part of the Seven Hills Wind Farm development
- Landscaping and screening measures, including hedgerow planting



## What will the substation look like?

Photomontages taken from various vantage points will be included within the final planning application to help visualise what the Moyvannan 110 kV Substation will look like from different angles and locations around the site, which is screened by existing hedgerows.

These photomontages set the proposed substation design against the existing landscape and infrastructure and are best viewed on a large screen.

We will be uploading the full set of images as soon as they become available. In the meantime, you can [view one of them here](#).

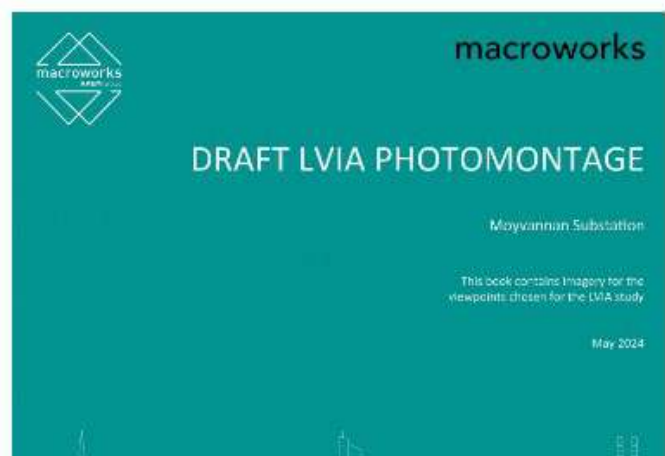
[Download our project brochure here](#).



## Environmental Impact Assessment Report (EIAR)

An Environmental Impact Assessment Report, or EIAR, is being compiled and will be submitted with this planning application. This report will examine the potential impacts which the proposed project could have on the environment and will include the following:

- Assessment of project alternatives
- Description of the proposed development
- Population and human health
- Biodiversity
- Land and soil
- Water
- Air quality and climate
- Landscape
- Cultural heritage
- Noise and vibration
- Material assets



## Appendix C



## FAQs

A planning application for the proposed Moyvannan 110 kV Substation is due to be submitted to An Bord Pleanála in the coming months.

Construction of the substation will take approximately 18 months, starting with the initial site preparation for access, followed by construction of the substation compound and installation of associated electrical equipment. A traffic management plan will set out how we will manage construction traffic during construction and our community engagement team will liaise with local residents and businesses to minimise disruption.

[For more FAQs, download our project brochure here.](#)



## Do you have any queries?

### Planning Process

We are currently in consultation with An Bord Pleanála (ABP) to determine if the project will be classified as a Strategic Infrastructure Development, or SID. Where projects are designated SID, the planning application must be submitted directly to ABP.

Once the planning application has been submitted to ABR all associated documents will be available to view at the following locations:

- Roscommon County Council offices
- The Offices of An Bord Pleanála
- An Bord Pleanála Online Planning Portal

All planning documentation will also be uploaded to this website.

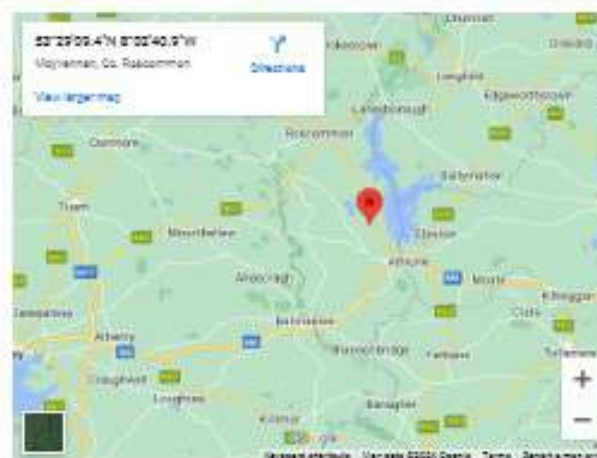


## Frequently Asked Questions



If you have any questions about our solar developments or other renewable energy projects, please contact our Community Liaison Officers by email at [clo@energia.ie](mailto:clo@energia.ie) or phone +353 (0)87 9544952.

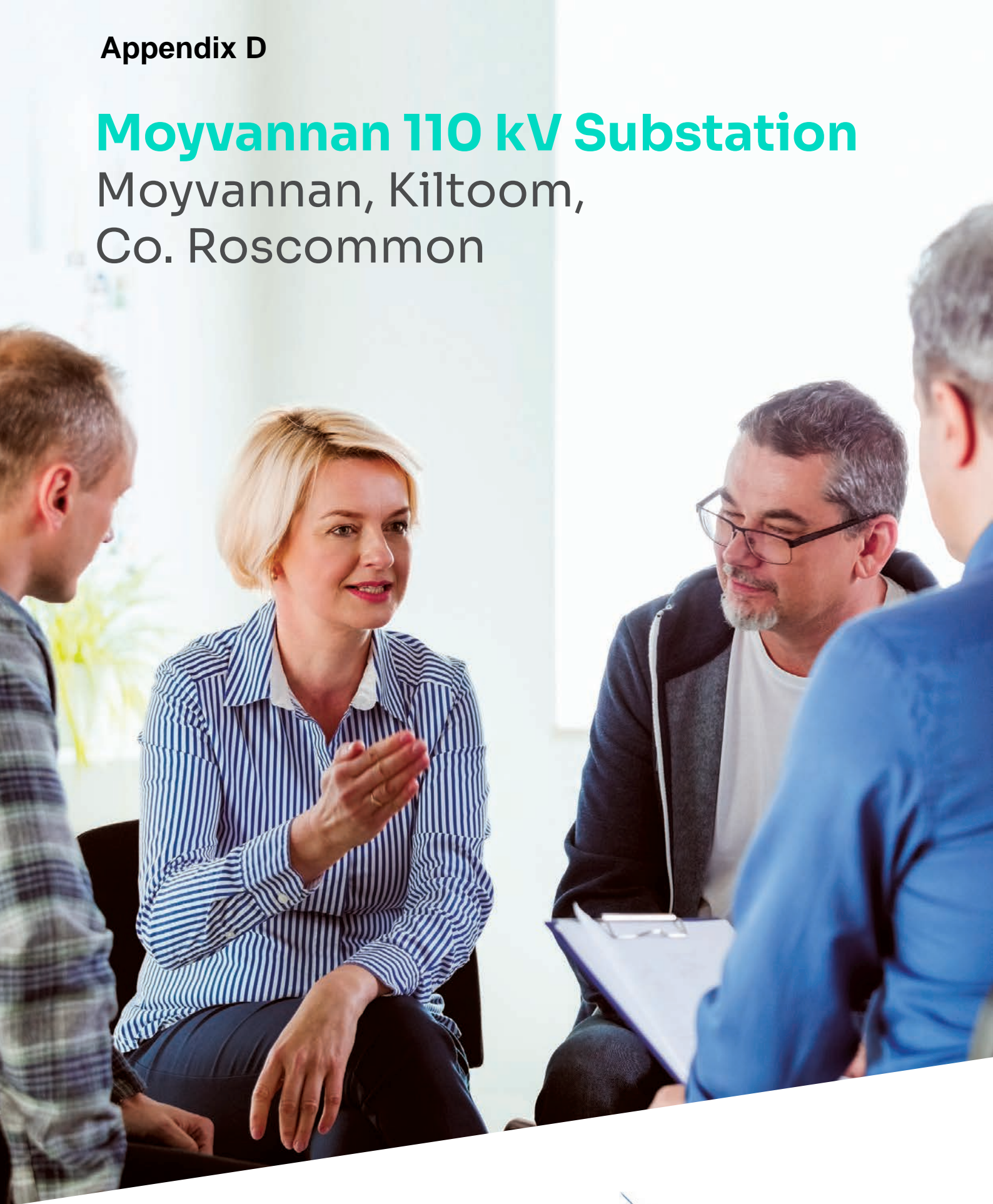
Coordinates:





# Moyvannan 110 kV Substation

Moyvannan, Kiltoom,  
Co. Roscommon





Dear Householder,

Energia Renewables and Galetch Energy Developments are working on plans for a 110 kV transmission substation in the townland of Moyvannan, Kiltoom, Co. Roscommon.

The proposed Moyvannan 110 kV Substation will facilitate the export of renewable energy from the Seven Hills Wind Farm project into the national grid. This will help Ireland to reach its 80% renewable electricity target by 2030, reducing our reliance on fossil fuels and increasing security of energy supply.

This information brochure provides an overview of the proposed substation development. A planning application is due to be submitted in the coming months.

Please don't hesitate to contact the project team with any questions you may have.

Yours sincerely



**Tony Gallagher**  
*Project Manager*  
Energia Renewables

## Contents

- |   |                             |
|---|-----------------------------|
| 1. Meet the team                            | 7. Planning process         |
| 2. Proposed substation location             | 8. FAQs                     |
| 3. Project overview                         | 9. Working with communities |
| 4. EIAR                                     | 10. . Working with schools  |
| 5. Map of proposed substation and wind farm | 11. . Contact us            |
| 6. Project website                          |                             |





# 1. Meet the team



## Energia Renewables

Energia Renewables are part of the wider Energia Group – a modern, customer-centric utility provider, focusing on renewable technology. We are committed to our customers and trusted by thousands of homes and businesses throughout Ireland to meet their needs in an evolving energy environment. We are a leading developer and operator of 16 onshore wind farm sites across the island of Ireland, generating over 350 MW of green electricity.

The Group's ongoing €3 billion 'Positive Energy' investment programme is developing onshore and offshore wind, solar, battery storage and green hydrogen production.

It is anticipated that this renewable energy programme will add 1.5 GW of additional renewable capacity to the system by 2030, facilitating the achievement of Climate Action targets.

We have aligned our responsible business activities with the UN's Sustainable Development Goals and are a Business Supporter of the All-Ireland Pollinator Plan, promoting pollinator-friendly land management on our wind farms.

## Galetech Energy Group

Galetech Energy Developments (GED) and Energy Services (GES) are part of the wider Galetech Energy Group, an Irish-owned renewable energy company with our headquarters located in Stradone, Co. Cavan. Our multi-jurisdictional team comprises over 130 people and our expertise spans the entire renewable sector, including development, construction and operation.

GED has been involved in the delivery of in excess of 500 MW of renewable energy developments on the island of Ireland and has a global development pipeline of over 3 GW, including onshore and offshore wind, solar and battery energy storage developments.

GES is an Irish multi-disciplinary renewable energy consultancy that specialises in the project management of planning, environmental and technical engineering services of renewable energy developments from project feasibility through to delivery and operation. GES combines the expertise of leading experts in wind farm design, planning and environmental assessment and has extensive experience in managing and coordinating the preparation of Environmental Impact Assessment Reports for wind energy and associated electricity grid and substation infrastructure developments. As Planning and Environmental Consultants for this project, GES will prepare an Environmental Impact Assessment Report, which will be submitted alongside the substation planning application.

## The Team



**Tony Gallagher**  
*Project Manager  
Energia Renewables*

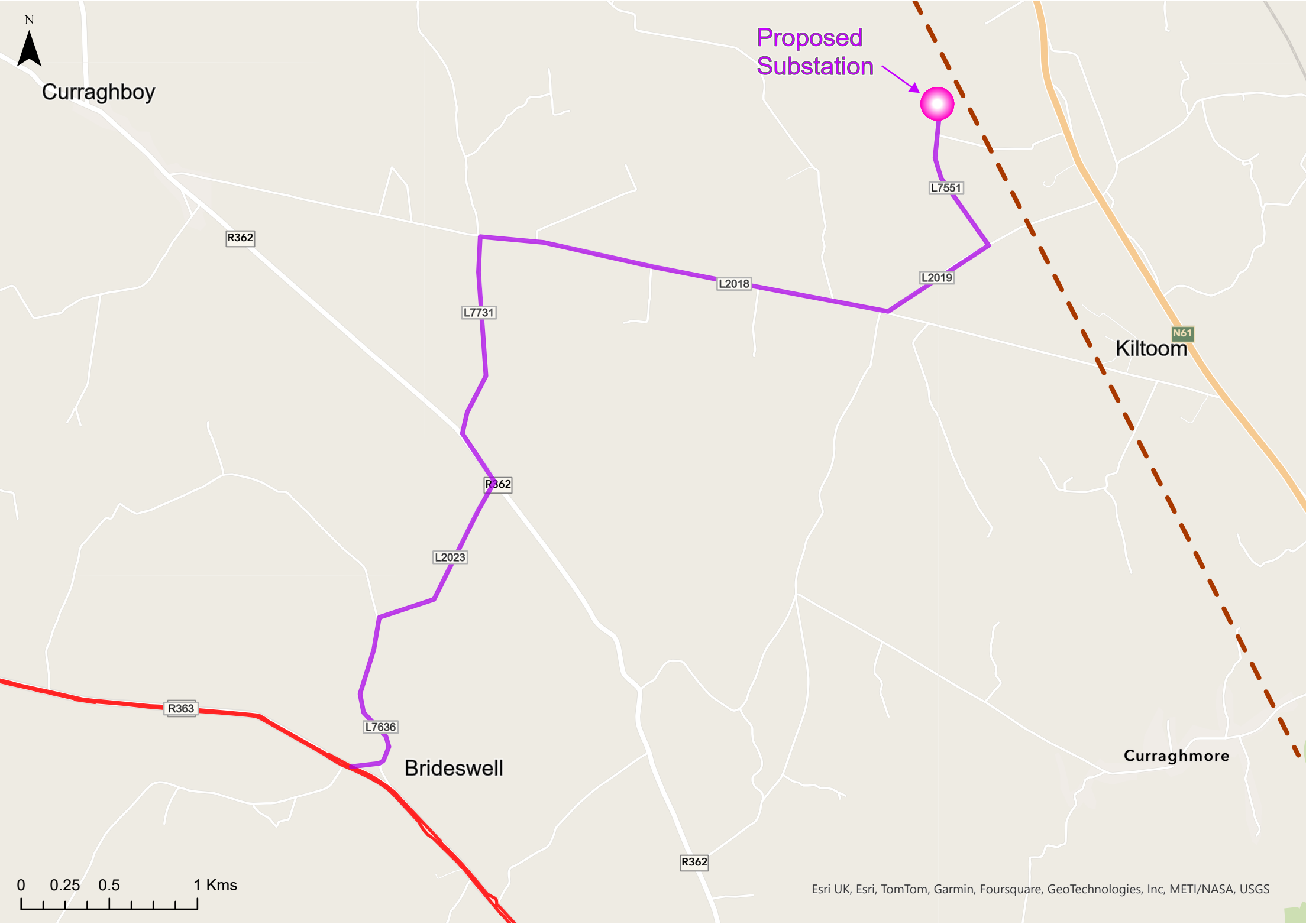


**Simon Carleton**  
*Senior Planner  
Galetech Energy  
Services*



**Rosy Billingham**  
*Community Liaison  
Officer (CLO)  
Energia Renewables*

## 2. Proposed substation location

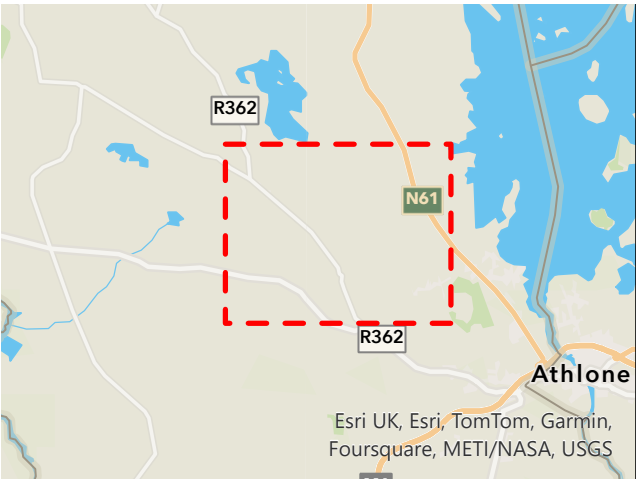


### About the site

The site has undergone extensive technical and environmental evaluation and was selected due to its proximity to the Seven Hills Wind Farm project and the existing Lanesborough to Athlone 110 kV overhead transmission line for grid connection. It is accessible and close to main transport routes for the delivery of electrical components.

### Legend

- Grid Route (Underground)
- Existing 110kV Lanesborough to Athlone overhead line





### 3. Project overview

The proposed Moyvannan 'loop-in loop-out' 110 kV Substation will connect to the existing Lanesborough to Athlone 110 kV overhead transmission line and will comprise:

- A compound enclosed by security fencing and gates, containing electrical plant and equipment
- An electrical control building containing electrical plant and equipment
- Two interface masts, approximately 15 m high, and underground electrical cable to facilitate connection to the existing 110 kV overhead transmission line
- Ancillary infrastructure within the compound will include busbars, line bays, surge arrestors, insulating and earthing equipment, circuit breakers, lighting stands and lightning masts
- Landscaping and screening measures, including the planting of hedgerows
- Approximately 7.5km of underground electricity cable, connecting the substation to an underground electricity cable at Brideswell as part of the Seven Hills Wind Farm development

The site has been subject to a comprehensive landscape and visual impact study to assess potential impacts on the landscape and sensitive receptors.

### 4. Environmental Impact Assessment Report

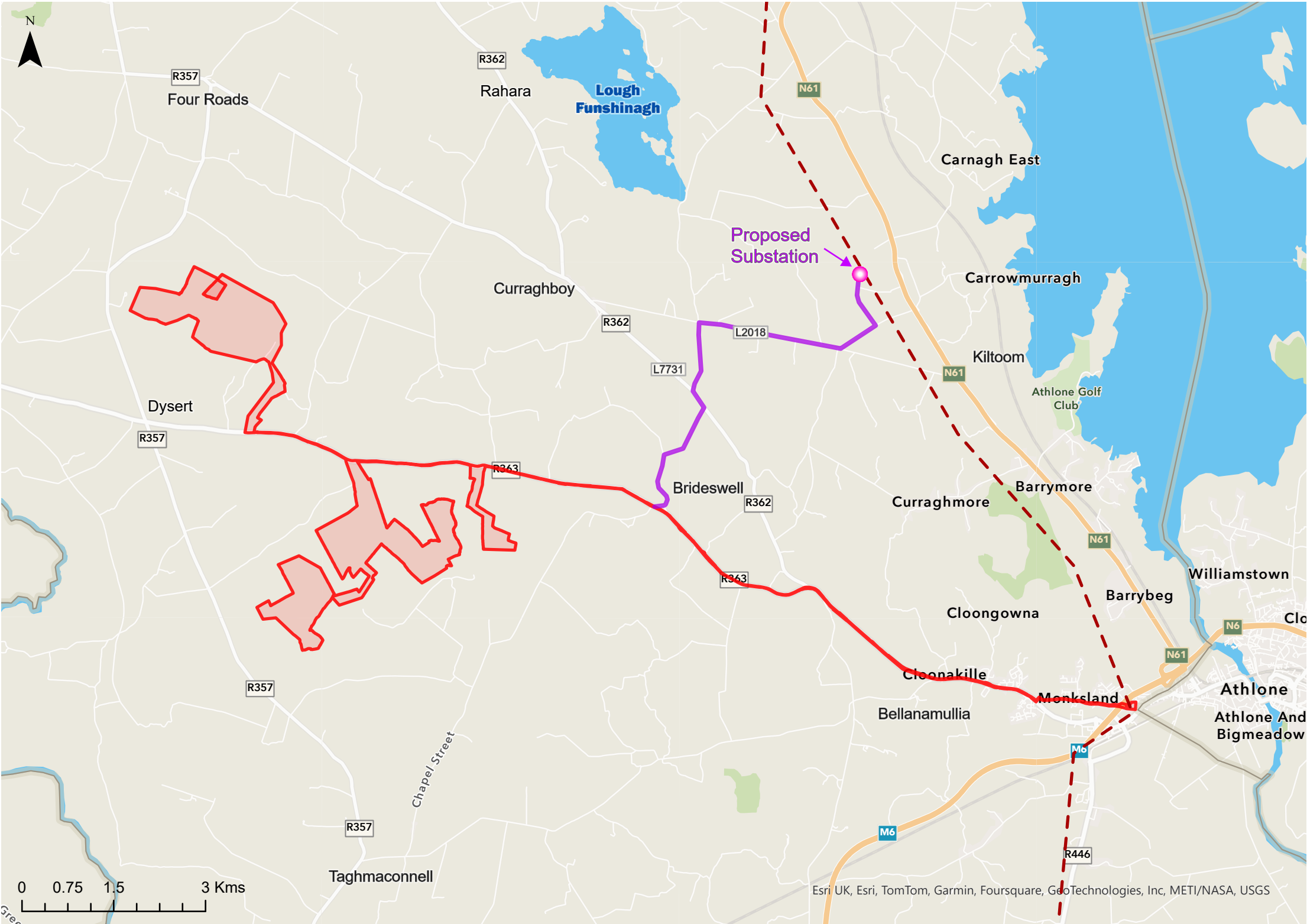
The proposed Moyvannan 110 kV Substation comprises grid connection infrastructure for the Seven Hills Wind Farm development. As a result, an Environmental Impact Assessment Report, or EIAR, is being compiled and will be submitted with this planning application.

This report will examine the potential impacts which the proposed project could have on the environment and will include the following:

- Assessment of project alternatives
- Description of the proposed development
- Population and human health
- Biodiversity
- Land and soil
- Water
- Air quality and climate
- Landscape
- Cultural heritage
- Noise and vibration
- Material assets



# 5. Map of proposed substation and wind farm



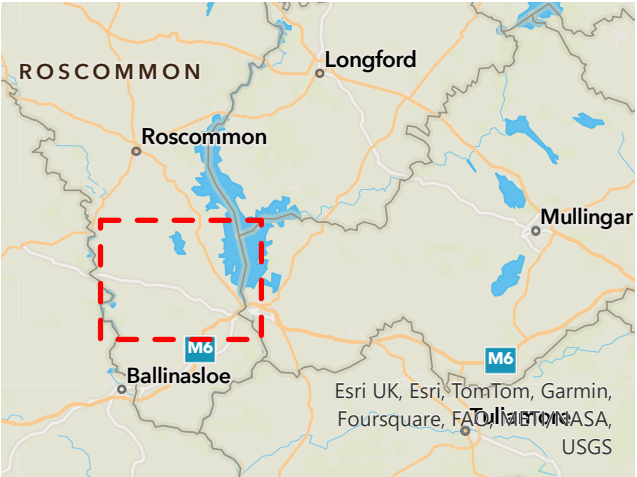
The proposed Moyvannan 110 kV Substation will facilitate the export of renewable energy from the Seven Hills Wind Farm, which is still in development, into the national electricity network. Together, the wind farm and substation projects will help Ireland to achieve its 2030 Climate Action targets and increase security of energy supply.

**Legend**

Wind Farm Boundary

Grid Route (Underground)

Existing 110kV Lanesborough to Athlone Overhead Line



Project details are correct at time of publication and may be subject to further development and alteration prior to the submission of the planning application.



# 6. Project website

We have created a project website, where you can view photomontages - or visual representations - of what the proposed Moyvannan 110 kV Substation will look like from key viewing points around the site. These photomontages can be viewed online at [www.moyvannansubstation.ie](http://www.moyvannansubstation.ie).

Existing view



Visualisation of proposed Moyvannan 110 kV Substation



The retention of all existing hedgerows and boundary vegetation at the substation site will provide screening. The site will also benefit from additional landscape planting and screening post construction.





## 7. Planning process

A planning application for the proposed Moyvannan 110 kV Substation will be lodged in the coming months. We are currently in consultation with An Bord Pleanála (ABP) to determine if the project will be classified as a Strategic Infrastructure Development, or SID. Where projects are designated SID, the planning application must be submitted directly to ABP. Roscommon County Council will submit a report on the application to ABP as one of the statutory consultees.

Once the planning application has been submitted to ABP, all associated documents will be available to view at the following locations:

- Roscommon County Council offices
- The Offices of An Bord Pleanála
- An Board Pleanála Online Planning Portal
- Project website: [www.moyvannansubstation.ie](http://www.moyvannansubstation.ie)





## 8. Frequently Asked Questions

### **Why is this substation necessary?**

Once operational, the proposed Moyvannan 110 kV Substation will facilitate the export of renewable energy from the nearby Seven Hills Wind Farm, which is still in development, onto the national grid. The substation will help Ireland to reach its Climate Action targets and reduce our dependence on fossil fuels, while increasing security of energy supply.

### **Why are you applying for another grid connection for the Seven Hills Wind Farm?**

Recent electrical surveys of the capacity of the local electricity network have shown that a connection to the Athlone 110 kV Substation is now no longer feasible. The proposed 'loop-in loop-out' Moyvannan 110 kV Substation will connect into the existing Lanesborough to Athlone 110 kV overhead transmission line.

### **How big is the site?**

The footprint of the Moyvannan 110 kV Substation compound will cover approximately 11,500 m<sup>2</sup>, which is just over one hectare (circa 2.5 acres). The substation will be connected to the Seven Hills Wind Farm development via approximately 7.5 km of underground cable.

### **What about visual impact?**

The retention of all existing hedgerows and boundary vegetation at the substation site will support the screening of potential residential views of the proposed substation. The site will also benefit from additional landscape planting post construction, which will support/infill existing hedgerow boundaries with appropriate native species in addition to the planting of new hedgerows.

### **Will new overhead lines be created?**

No additional overhead lines will be installed. Two Cable Interface Masts will be installed beside the substation to facilitate a connection to the existing Lanesborough to Athlone 110 kV overhead line. All cables from this existing overhead line into the proposed Moyvannan 110 kV Station will be underground.

### **How close to properties will the substation and new infrastructure be?**

The nearest residential property is approximately 345 m from the main substation site.

### **Does a substation pose health risks to humans or animals?**

Some people have concerns about the electric and magnetic fields (EMFs) found near electricity lines and cables. When electric current flows, EMFs are produced but register in the extremely low frequency end of the electromagnetic spectrum. They occur in the home, in the workplace, or anywhere we use electricity. Natural sources of EMFs include the earth's geomagnetic field and electric fields from storm clouds. The consensus from health and regulatory authorities is that extremely low frequency EMFs do not present a health risk.

### **Is there audible sound from a substation?**

Unlike many substations, the Moyvannan 110 kV Substation will not require a grid transformer. Noise surveys and reports will nevertheless be completed as part of the planning application and will be available for review.

### **Will the substation be lit up at night?**

Construction will be scheduled to take place during daylight so that wildlife is not disturbed. If artificial lighting is required at any point during construction, it will be both temporary and directional and will only illuminate the section of the site where work is continuing. Once energised and operational, the substation will not be lit up at night. However, emergency lighting will be installed to facilitate emergency access outside daylight hours.

### **Will there be a fence around the substation?**

A 2.6 m high palisade fence will be installed around the substation compound with an additional 1.4 m high post and rail fence positioned 3 m along the outer perimeter boundary in line with EirGrid policy.

### **What safety measures will be in place?**

Safety is at the core of the development and construction of all our projects. The substation will be built to EirGrid and ESB Networks standards and will be subject to a rigorous design review process prior to the commencement of construction. The purpose of these design specifications and reviews is to ensure the safety of both the public and operational staff working in the substation.

### **How long will construction last?**

Construction of the substation will take approximately 14 – 18 months. This will start with the initial site preparation works for access, followed by the construction of the substation compound and installation of the associated electrical equipment before the final commissioning and energisation stage.

### **What about construction traffic?**

A traffic management plan will be put in place, setting out how we will manage construction traffic during the construction of the project. Our construction and community engagement team will liaise with local residents and businesses to minimise disruption.

### **How often will maintenance be carried out?**

Scheduled maintenance is generally completed on a monthly basis, with more intensive maintenance scheduled annually.

### **What are the next steps?**

We are engaging with the local community to provide residents living near the proposed Moyvannan 110 kV Substation site with project information and an opportunity to ask questions and have their say. Our Community Liaison team will be visiting homes and delivering information in the immediate area. We will also be holding a public information evening so that members of the public can drop in to meet the project team and find out more about the project. Residents can also contact our Community Liaison Officer by email or by telephone. Once submitted, planning application documents will be available to view at the following locations:

- Roscommon County Council offices
- The Offices of An Bord Pleanála
- An Bord Pleanála Online Planning Portal
- Project website: [www.moyvannansubstation.ie](http://www.moyvannansubstation.ie)



## 9. Working with communities

The proposed Moyvannan 110 kV Substation will serve the nearby Seven Hills Wind Farm development, which will operate a substantial community benefit fund to support local community groups, voluntary organisations and environmental projects.

Energia and Galetch already operate a number of renewable energy benefit funds, which are administered by independent charitable trusts. Our funds are set up in conjunction with local communities to ensure that our funding has a positive and lasting impact. We begin allocating community project grants, based on an annual application process, one year after the commencement of commercial operation and energy generation.



## 10. Working with schools

Once our sites are up and running, our Operations teams can facilitate school and college visits to our local wind farm developments. In the meantime, we're keen to arrange school workshops and classroom talks on renewable energy.

- Learn... about wind and solar energy
- Discover... how wind turbines and solar panels generate electricity
- Explore... the need for climate action and energy transition





# 11. Contact us

## We want to hear from you

If you have any questions, please contact us:



Call our Community Liaison Officer on **087 9944952**



Email the project team at **[clo@energia.ie](mailto:clo@energia.ie)**



And don't forget to check the website for updates:  
**[www.moyvannansubstation.ie](http://www.moyvannansubstation.ie)**



**en**é**rgia**  
Renewables



# Appendix E

Mill House, Ashtown Gate, Navan Road, Dublin, D15 H70K  
Telephone: +353 1 869 2000  
[www.energia.ie](http://www.energia.ie)



June 2024

Dear Householder,

I called at your house today on behalf of Energia Renewables and Galetch Energy Developments to inform you about our plans for a 110 kV substation development in the townland of Moyvannan, Kiltoom, County Roscommon, which will facilitate the export of renewable energy from the Seven Hills Wind Farm project to the national grid.

The proposed Moyvannan 110 kV Substation will connect to the existing Lanesborough to Athlone overhead transmission line. No additional overhead lines will be installed.

Please see the attached map and our information brochure for more details.

## Drop-in information evening

The Energia Renewables and Galetch Energy Developments teams will be holding a drop-in information session later this month.

**Location: St Brigid's GAA Club, Newpark, Kiltoom, Athlone**

**Date: Wednesday 19th June 2024**

**Time: 3pm – 8pm**

Come along at any time between 3pm and 8pm to meet the team and find out more.

## About Energia Renewables

Energia Renewables are part of the wider Energia Group, a modern, customer-centric utility provider, focusing on renewable technology and flexible electricity generation. We are committed to our customers and trusted by thousands of homes and businesses throughout Ireland to meet their needs in an evolving energy environment.

Energia currently owns and operates 16 wind farm sites across the island of Ireland, generating over 350MW of renewable energy. Energia Group's ongoing €3



billion 'Positive Energy' investment programme is developing onshore and offshore wind farms, solar energy, battery storage and green hydrogen production.

It is anticipated that this renewable energy programme could add up to 2.6 GW of additional renewable capacity to the system by 2030, facilitating the achievement of government Climate Action targets.

### **What happens next?**

To find out more about this proposed development, please join us for our drop-in information session on Wednesday 19<sup>th</sup> June from 3pm to 8pm at St Brigid's GAA Club, Newpark, Kiltoom, Athlone.

Following our community consultation, we plan to submit a planning application in the coming months. We will be posting updates on our project website:

[www.energiagroup.com/renewables](http://www.energiagroup.com/renewables).



In the meantime, if you have any questions, please do not hesitate to contact me.

A handwritten signature in black ink, appearing to read 'Rosy' followed by a stylized surname.

**Rosy Billingham**

*Community Liaison Officer*

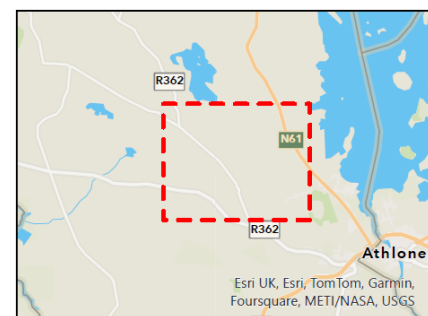
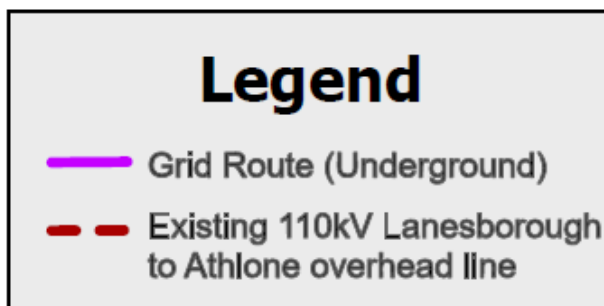
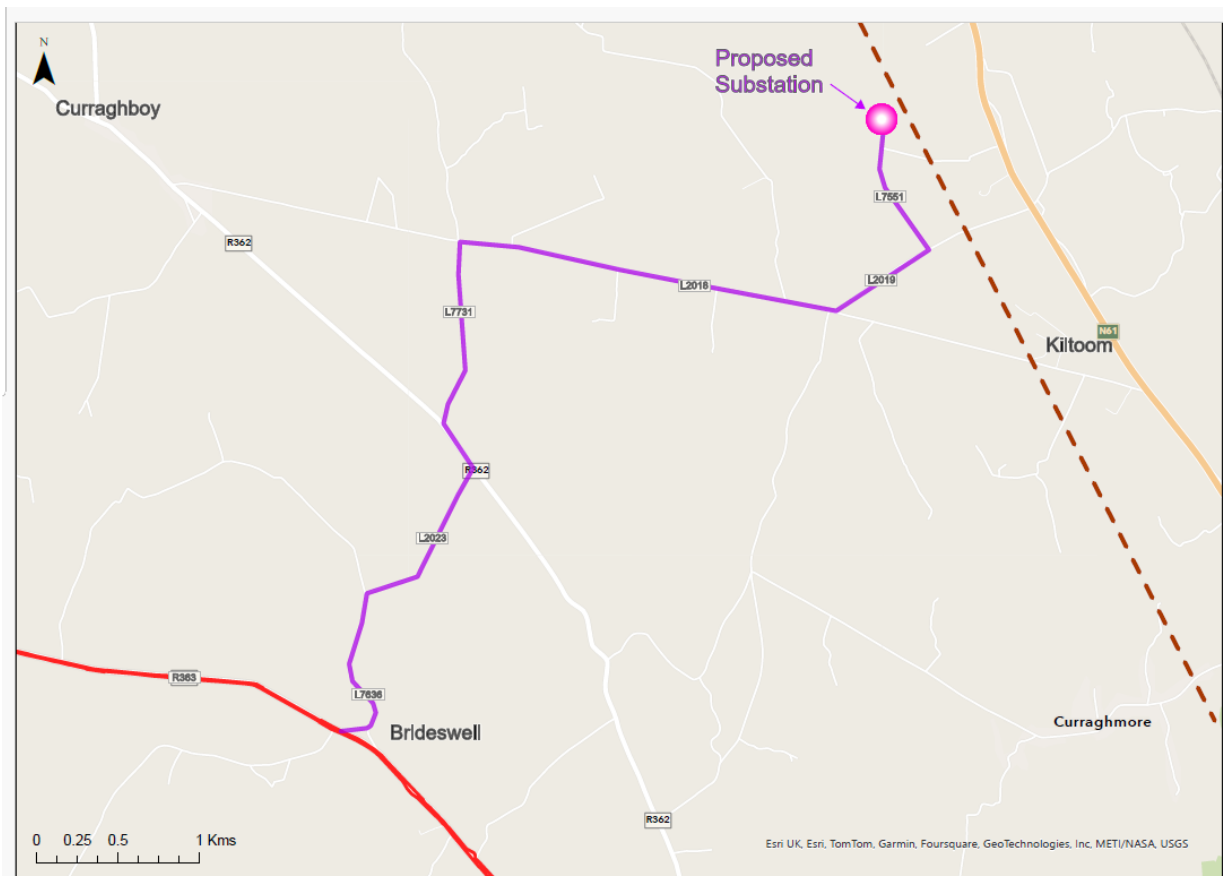
**Mob:** +353 (0)87 944952

**Email:** [rosy.billingham@energia.ie](mailto:rosy.billingham@energia.ie)

**energia**  
Renewables



## Proposed Moyvannan 110 kV Substation location



**en<sup>ē</sup>ergia**  
Renewables

**GALETECH**  
Energy Developments

# Funding for ten women's groups

Ten women's groups across the county are set to receive funding under the Local Enhancement Programme 2024.

The groups include: Ballaghaderreen Women's Shed, €620; Ballinacorney-Elphin Women's Shed Elphin, €1,500; Boyle Women's Group, €1,750; Four

Roads Ladies Football Club, €3,750; Kilbegnet Hall Ladies Club, €2,350 and Kilgefin Women's Group Shed, Kilrooskey, €5,586.92.

Also included in the funding are Roscommon Girl Guides, Roscommon Town, €1,200; Roscommon LGFC, LGFA Roscommon Town, €1,950; St

Michael's Gaelic for Mothers & Others, Boyle, €650 and Tulsk ICA, €3,750.

The Minister for Rural and Community Development, Heather Humphreys TD, announced the funding last week which is intended to support almost 500 women's groups nationwide.

Under the initiative, small grants are being provided to assist groups in every single county to enhance/improve their facilities and to purchase equipment.

Minister Humphreys said she was delighted to announce the successful projects around the country. "These groups

are working tirelessly within communities to provide both young and old with an outlet to socialise, upskill, relax and so much more," she said.

"I am constantly amazed by the work, community spirit and ethos of the many, many groups that give so much of their time to enhance

and improve their communities.

"I want you to know that I see what you do and I hope that through these grants my department can help."

Minister Humphreys added: "The grants may be small in value but to the successful groups they are invaluable – they

can open up so many possibilities for so many people.

"I will continue to engage with the communities of Ireland to see how my Department can continue to support you going forward."

## Two local dance students heading for World Cup finals

Two dance students from Victoria Walker Dance, Ruby from Elphin and Rachel from Boyle, have secured their place to represent Ireland in the upcoming Dance World Cup finals scheduled to take place in Prague from June 27th to July 6th.

They successfully qualified in lyrical dance and jazz dance during the Irish qualifiers.

The Dance World Cup, renowned as one of the most prestigious dance competitions globally, draws participants from across the world, showcasing exceptional talent in various dance forms. Ruby and Rachel's selection is a testament to their dedication, skill, and passion for dance, as well as the high standard of training provided by Victoria Walker Dance.

Both Ruby and Rachel have demonstrated exceptional talent and commitment to their craft, honing their skills under the guidance of their mentor, Victoria Walker. Their journey to the Dance World Cup is not only a personal achievement but also a reflection of the thriving dance community in Ireland and our local area.

A special thanks to Richelle



Ruby and Rachel who have secured their place to represent Ireland in the upcoming Dance World Cup finals scheduled to take place in Prague.

South for her jazz choreography for one of the entries.

Victoria Walker, founder of Victoria Walker Dance, expressed pride in Ruby and Rachel's achievement, stating: "It's a moment of immense pride for our dance school to have two of our students representing Ireland on such a prestigious platform. Ruby and Rachel, who have been with me since the ages of 3 and 4, have worked so hard to reach this stage, and their selection is well-deserved. We are confident that they will make us

proud at the Dance World Cup."

As they gear up to compete on the international stage, Ruby and Rachel carry with them the best wishes and support of their local community. Their journey reflects the power of passion, perseverance and talent. For information please contact the school. If anyone would like to sponsor or support the girls, you can do so through the 'Help Victoria Walker Dance get to the Dance World Cup Prague' GoFundMe page.

## SNAKE PARK



A group of children, parents, Carrick Carnival and Tidy Towns volunteers putting finishing touches to the new snake in Carrick's Linear Park. The colourful attraction is comprised of rocks that were individually hand-painted by children in several local schools, and is a Tidy Towns project. Picture: Gerry Faughnan

**Healthy Feet are happy feet**

**PODIATRIST/CHIROPODIST**  
**SARAH FLEMMING**  
**C.B.Sc (Hons)**  
**Podiatry MScPI**  
**WILL BE IN ATTENDANCE AT THE FOLLOWING PHARMACIES**

**Mondays:** Tullys totalhealth Pharmacy, Castlerea 094 9620009

**Tuesdays:** Boyle totalhealth Pharmacy, Boyle 071 9664321

**Wednesdays:** Byrnes totalhealth Pharmacy, Kiltimagh 094 9381292

**Thursdays:** Curleys totalhealth Pharmacy, Ballyhaunis 094 9630110

**Fridays:** Tullys totalhealth Pharmacy, Castlerea 094 9620009

## Major plans to enhance Cootehall

By Claire McGovern

Plans to enhance Cootehall Village Park will be a huge boost to the area, members of Boyle Municipal District said last week.

Roscommon County Council intends to carry out extensive works, which include the resurfacing of existing walkways, provision of a covered outdoor space with age friendly seating, soft landscaping to include trees, shrubs and grass along with the extension of the existing play area.

The work will also see the provision of a mini basketball court, the extension of the existing carpark and also all associated site and ancillary works.

Welcoming the approval of the plans,

members, who were attending their last meeting before the local elections, heard that no submissions were received following the publication of the notice of the works and the intention was to develop the village as an attractive place to live and work and to strengthen a vibrant community.

Chairman of the MD, Cllr Liam Callaghan, welcomed the scheme outlining that a committee had been set up to develop the village.

This was echoed by Cllr Valerie Byrne who said there was an enthusiastic committee working on the ground for the betterment of the village and "this will give them a huge boost."

Cllr Tom Crosby stated this was a comprehensive scheme for an area that needed investment.

## Drop-in information open day

### Moyvannan 110 kV Substation Development

**Location:** St Brigid's GAA Club, Newpark, Kiltoom, Athlone

**Date:** Wednesday 19th June 2024

**Time:** 3pm - 8pm

Energia Renewables and Galetech Energy Developments are holding a drop-in information session to engage with the local community on our plans for a 110 kV substation in the townland of Moyvannan near Kiltoom, Co. Roscommon. The development will facilitate the export of renewable energy from the Seven Hills Wind Farm project into the national grid.

**For further information, please contact our Community Liaison Officer at [clo@energia.ie](mailto:clo@energia.ie) or call 087 9944952.**



# Building of €100m Center Parcs expansion to start in September

CENTER Parcs announced on Thursday last that construction work on a €100 million expansion of its Longford Forest resort in Ballymahon is to begin this September.

The major investment by the company comes ahead of next month's fifth anniversary of the opening of Longford Forest, and will increase the capacity of the resort to approximately 3,500 guests at a time.

The project is due to be completed in stages, and Center Parcs said it would see the creation of 300 jobs during construction, along with approximately 250 permanent jobs when operational.

The additions to the resort's facilities will include 198 more accommodation lodges, including four luxury treehouses.

They will also include a new restaurant and an additional coffee house, as well as extensions to the existing

restaurants, leisure and car park facilities, and Longford Forest's 'subtropical swimming paradise'.

The Aqua Sana spa at the resort will be expanded to include new treatment rooms and a new luxurious treetop sauna.

Center Parcs also released figures on Thursday relating to its impact on Ireland's domestic tourism market.

It said that, in the 12 months between April 2023 and April 2024, Center Parcs Longford Forest generated €58 million for the Irish economy, €23 million in Exchequer revenue, and welcomed 260,700 guests.

Locally, the resort has generated €44 million within county Longford and created over 1,300 jobs, Center Parcs said. Of those employed, 60% are from county Longford, and a further 36% reside in neighbouring counties.

Center Parcs UK & Ireland's

CEO, Colin McKinlay, commented: "We are delighted to announce that following several years of planning, we will commence work on our expansion of Longford Forest this autumn."

"Year on year, we have seen an increase in the number of guests we have welcomed to Longford Forest and many returning families, who have really taken Center Parcs into their hearts."

"Speaking of hearts, at Center Parcs we feel so fortunate to be geographically located at the heart of Ireland and have the ongoing support of the local community."

We are thrilled to be able to create even more opportunities for them and boost the local economy further."

The company said the expansion of the resort would place a strong emphasis on sustainability and protecting the local environment.



The 'subtropical swimming paradise' at Center Parcs Longford Forest is to be extended as part of a €100 million expansion of the resort which will get underway in September.

An air source heat pumped network will power the new lodges, and measures are due to be put in place at all facilities to reduce energy

consumption, including the use of high-efficiency LED lighting.

Center Parcs Longford Forest opened in July 2019

and the company said it had consistently seen occupancy rates of 99%, with more than 90% of guests rating their holiday as excellent or good.

**energía**  
Renewables

**GALETECH**  
Energy Developments

## Drop-in information open day

### Moyvannan 110 kV Substation Development

**Location:** St Brigid's GAA Club, Newpark, Kiltoom, Athlone

**Date:** Wednesday 19th June 2024

**Time:** 3pm - 8pm

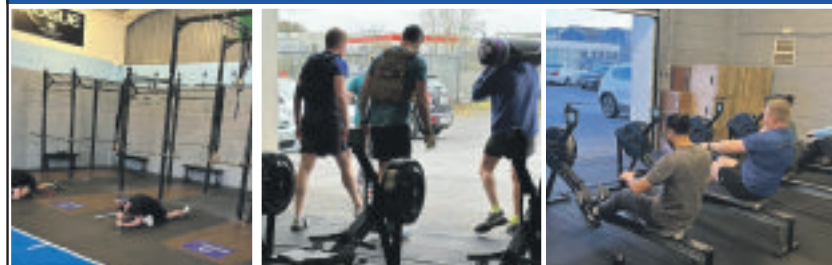
Energia Renewables and Galetech Energy Developments are holding a drop-in information session to engage with the local community on our plans for a 110 kV substation in the townland of Moyvannan near Kiltoom, Co. Roscommon. The development will facilitate the export of renewable energy from the Seven Hills Wind Farm project into the national grid.

**For further information, please contact our Community Liaison Officer at [clo@energia.ie](mailto:clo@energia.ie) or call 087 9944952.**

# CROSSFIT

Strengthen your  
Body & Mind

**Croí**



## Men's Fitness at Crossfit Croí

We have a strong community of men who want to live a full life in their 80's- not just survive until they're 80!

- Personal coaching in a class setting to ensure excellent form and technique
- Full body workouts to build muscular strength and endurance
- Mobility to help prevent injury and improve flexibility
- Suitable and adaptable for every level, from beginner to athlete
- An hour to decompress from the pressures of life and do something for you.
- Helps improve mental wellbeing

**Do something your future self will thank you for. Contact us today!**

Phone: 0858186055

Email: [crossfitcroi@gmail.com](mailto:crossfitcroi@gmail.com)

Find us on Facebook - CrossfitCroí



**Blyry Commercial & Business Park, Athlone**



# Appendix H

**Simon Carleton**

---

**Subject:** Energia and Galetch proposed substation development information evening

From: Billingham Rosy

Sent: Friday, June 14, 2024 2:30 PM

To:

Subject: Energia and Galetch proposed substation development information evening

Dear Councillor

On behalf of Energia Renewables and Galetch Energy Developments, I would like to inform you about our plans for a 110 kV substation development in the townland of Moyvannan, Kiltoom, County Roscommon, which will facilitate the export of renewable energy to the national grid from the Seven Hills Wind Farm project, which is still in development.

The proposed Moyvannan 110 kV Substation will loop into the existing Lanesborough to Athlone overhead transmission line. No additional overhead lines will be installed.

Please see our project website for more details, including maps and FAQs: Moyvannan Substation <<https://moyvannansubstation.ie/>> .

## **Drop-in information evening**

**The Energia Renewables and Galetch Energy Developments team will be holding a drop-in information session next week.**

**Location: St Brigid's GAA Club, Newpark, Kiltoom, Athlone**

**Date: Wednesday 19th June 2024**

**Time: 3pm – 8pm**

Come along at any time between 3pm and 8pm to meet the team and find out more about the project.

We have visited households within a radius of up to 1km of the proposed substation and delivered letters and brochures. We are providing follow-up information, where necessary. The upcoming information event has been advertised in the Roscommon Herald and Westmeath Independent.

Following our community engagement, we plan to submit a planning application in the coming months. We will be posting updates on our project website: Moyvannan Substation <<https://moyvannansubstation.ie/>> .

If you have any questions, please do not hesitate to contact me.

Many thanks

Rosy

---

**Rosy Billingham**

*Community Engagement & Communications Manager*

**Mob** +44 (0)78804 32201 **or** +353 (0) 8799 44952

**Email** [rosy.billingham@energia.ie](mailto:rosy.billingham@energia.ie) **or** [clo@energia.ie](mailto:clo@energia.ie)

Energia Renewables Development Limited t/a Energia Renewables

Registered office: The Liberty Centre | Blanchardstown Retail Park | Dublin 15 | D15 YT2H





Appendix I





# Moyvannan 110 kV Substation information event

June 2024

Energia Renewables and Galetch Energy Developments are working in partnership on plans for a 110 kV transmission substation in the townland of Moyvannan, Kiltoom, Co. Roscommon.

The proposed Moyvannan 110 kV Substation will facilitate the export of renewable energy from the Seven Hills Wind Farm project into the national grid.

This will help Ireland to reach its 80% renewable electricity target by 2030, reducing our reliance on fossil fuels and increasing security of energy supply.

We hope you find this exhibition useful and are looking forward to answering your questions.

Your feedback on the proposed substation development at tonight's event is very important to us and issues raised will be taken into consideration and reflected upon in the final planning application, which is due to be submitted in the coming months.



# Proposed location & project overview

## About the site

The site has undergone extensive technical and environmental evaluation and was selected due to its proximity to the Seven Hills Wind Farm project and the existing Lanesborough to Athlone 110 kV overhead transmission line for grid connection. It is accessible and close to main transport routes for the delivery of electrical components.

## Project overview

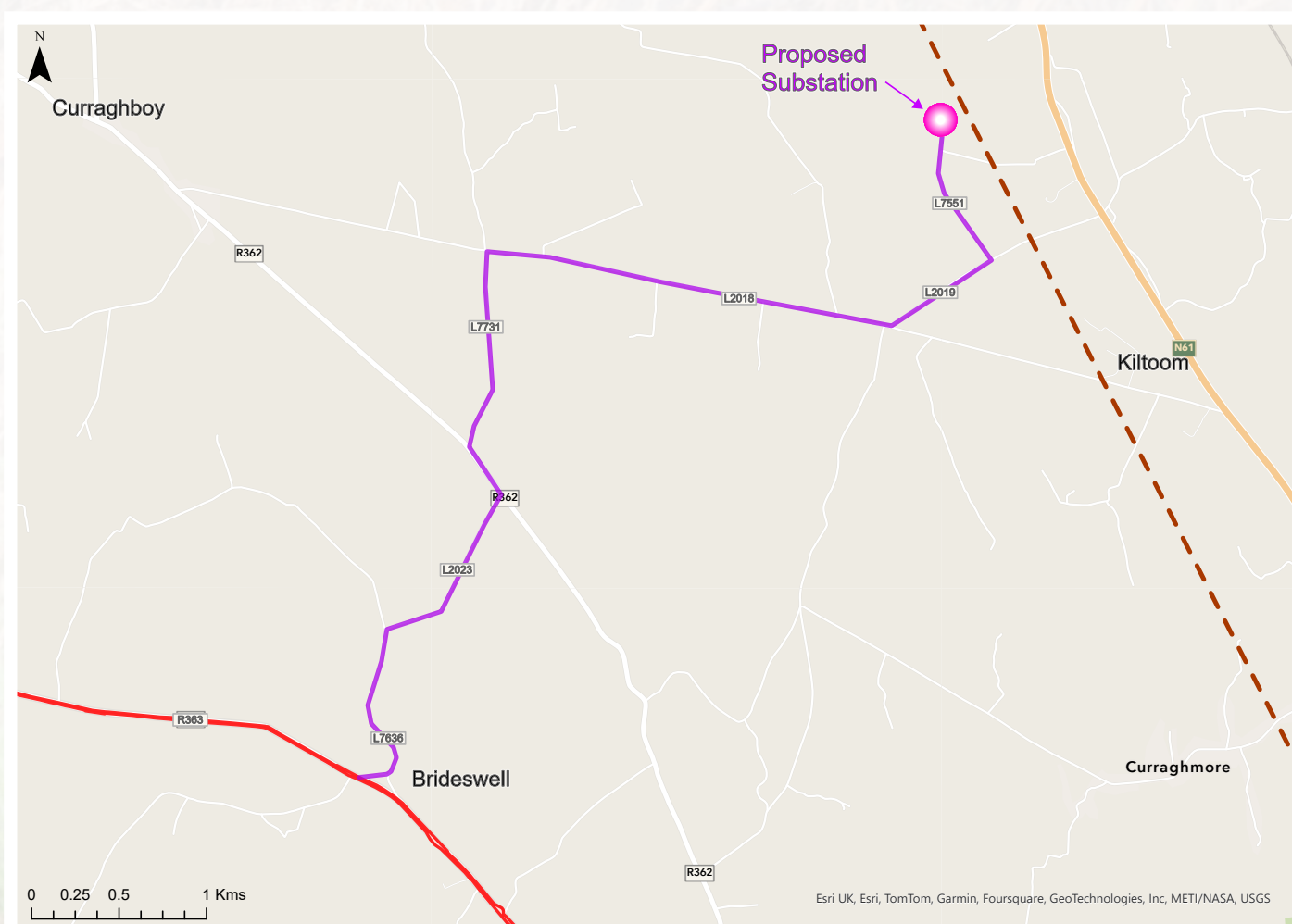
The proposed Moyvannan 'loop-in loop-out' 110 kV Substation will connect to the existing Lanesborough to Athlone 110 kV overhead transmission line and will comprise:

- A compound enclosed by security fencing and gates, containing electrical plant and equipment
- An electrical control building containing electrical plant and equipment

- Two interface masts, approximately 15 m high, and underground electrical cable to facilitate connection to the existing 110 kV overhead transmission line
- Ancillary infrastructure within the compound will include busbars, line bays, surge arrestors, insulating and earthing equipment, circuit breakers, lighting stands and lightning masts
- Landscaping and screening measures, including the planting of hedgerows
- Approximately 7.5km of underground electricity cable, connecting the substation to an underground electricity cable at Brideswell as part of the Seven Hills Wind Farm development

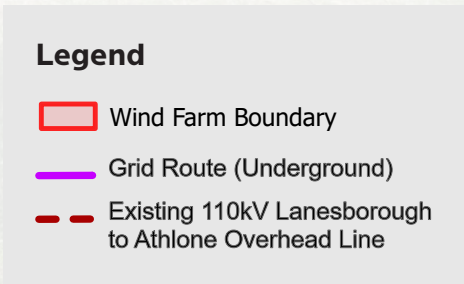
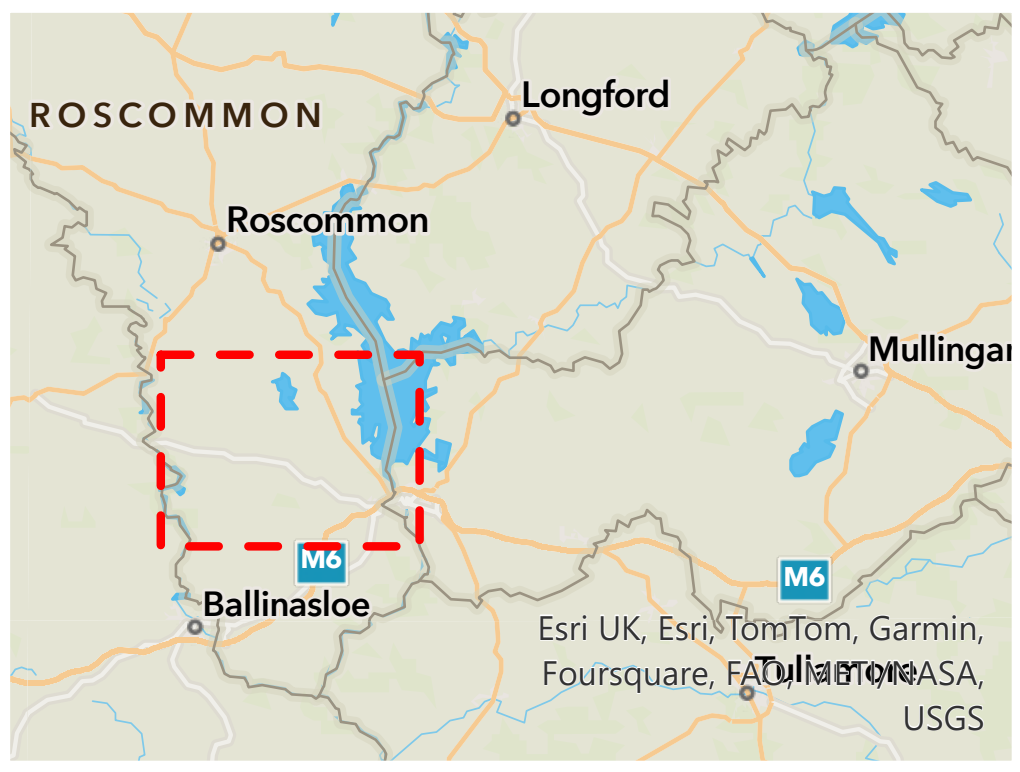
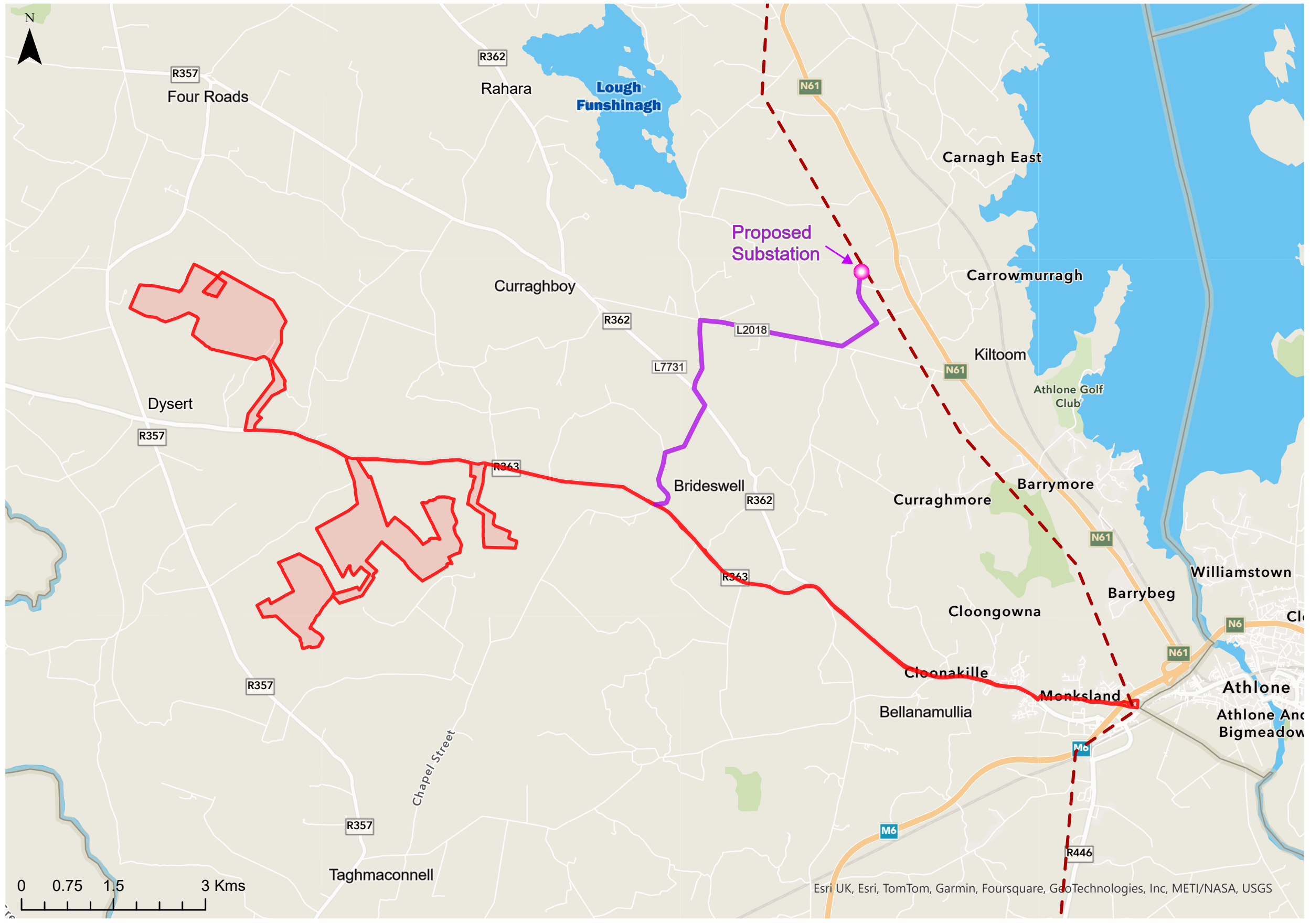
The site has been subject to a comprehensive landscape and visual impact study to assess potential impacts on the landscape and sensitive receptors.

## Proposed substation location





# Map of proposed substation and wind farm





# Environmental Impact Assessment Report (EIAR)

The proposed Moyvannan 110 kV Substation comprises grid connection infrastructure for the Seven Hills Wind Farm development.

As a result, an Environmental Impact Assessment Report, or EIAR, is being compiled and will be submitted with this planning application.

This report will examine the potential impacts which the proposed project could have on the environment and will include the following:

- Assessment of project alternatives
- Description of the proposed development
- Population and human health
- Biodiversity
- Land and soil
- Water
- Air quality and climate
- Landscape
- Cultural heritage
- Noise and vibration



# What happens next?

A planning application for the proposed Moyvannan 110 kV Substation will be lodged in the coming months. We are currently in consultation with An Bord Pleanála (ABP) to determine if the project will be classified as a Strategic Infrastructure Development, or SID. Where projects are designated SID, the planning application must be submitted directly to ABP.

Roscommon County Council will submit a report on the application to ABP as one of the statutory consultees. Once the planning application has been submitted to ABP, all associated documents will be available to view at the following locations:

- Roscommon County Council offices
- The Offices of An Bord Pleanála
- An Board Pleanála Online Planning Portal
- Project website:  
[www.moyvannansubstation.ie](http://www.moyvannansubstation.ie)

## Feedback

Thank you for coming to our information event. We hope you found it useful.

If you have any questions about the proposed development, please ask a member of the team here tonight.

We welcome your feedback on the project and have provided comment forms on the tables in the hall.

Our Community Liaison Officer is available to answer questions – just email [clo@energia.ie](mailto:clo@energia.ie)

We will post information updates on the project website:  
[www.moyvannansubstation.ie](http://www.moyvannansubstation.ie)





# Answering your questions

## Data Protection consent and privacy notice

If you would like to hear more from Energia Renewables about the Moyvannan 110 kV Substation project, please provide your contact details. In order for us to provide you with follow-up information, we need to collect and store some contact information, as outlined below. You can opt out at any time – just let us know at [clo@energia.ie](mailto:clo@energia.ie).

### Your details

Name:	<input type="text"/>
Address:	<input type="text"/>
Eircode:	<input type="text"/>
Telephone number:	<input type="text"/>
Email address:	<input type="text"/>
Signature:	<input type="text"/>
Date:	<input type="text"/>

### How may we contact you?

Please choose the methods by which you would prefer to receive information from the project team:

- ☐ Email
- ☐ Mobile

### Any questions or comments? *(Please continue overleaf)*





**Any further comments or questions for Project Team?**

**Thank you for your feedback**

## **How to change your consent**

If you wish to amend your choice or withdraw your consent you can do so at any time. Please email [clo@energia.ie](mailto:clo@energia.ie) to change your contact or privacy preferences.

## **Retention of your Information**

Energia Group will only retain your personal data for as long as is necessary for the purposes for which it was collected and in order to comply with any regulatory or business requirements. We will delete the data once it is no longer required, or if you contact us and ask for it to be deleted as referenced above.

## **Further Privacy Information**

For further details on how Energia Group, collects, stores, secures and processes personal data please read the [Energia Group Privacy Statement](#). If you require further information, please contact the Energia Group Data Protection Officer at [Dataprotection@energiagroup.com](mailto:Dataprotection@energiagroup.com).

---

### **Company Information**

Energia Group means Energia Group ROI Holdings DAC, a company registered in Ireland, Company No. 444149, having its registered office at The [The Generali Building](#), Blanchardstown Retail Park, Dublin, D15 YT2H, together with all its subsidiaries. Further information can be found at <https://www.energiagroup.com/>

Energia Renewables  
3rd floor Mill House  
Ashtown Gate  
Navan Road, Dublin  
D15 H70K, Ireland

[energiagroup.com/renewables/](http://energiagroup.com/renewables/)

**energía**  
Renewables



